

Mutina

Déchirer

by Patricia Urquiola



Déchirer (La Suite) Net, Trace



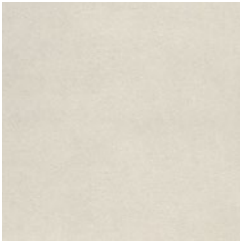
Colors



Net Calce



grout: calce 01



Trace Calce



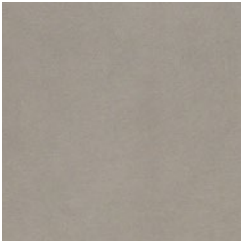
grout: calce 01



Net Cemento



grout: cemento 60



Trace Cemento



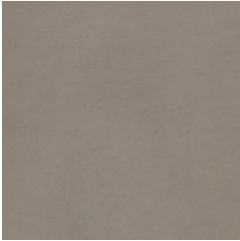
grout: cemento 60



Net Cenere



grout: cenere 62



Trace Cenere



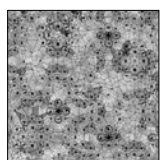
grout: cenere 62

Déchirer (La Suite) Net, Trace

General information

collection	Déchirer
design	Patricia Urquiola, 2010
production	Industrial
material	Unglazed homogeneous porcelain stoneware
features	Squared and rectified slabs each one exactly the same as the others
thickness	12 mm
nominal sizes	NET: 120·120 cm (47"·47"), 30·120 cm (12"·47"), 60·60 cm (24"·24") TRACE: 120·120 cm (47"·47"), 30·120 cm (12"·47"), 60·60 cm (24"·24")
specification	– 3 base colors – 2 engraved textures, Trace and Net, in 3 colors (registered design) – CONTINUA Technology production system (environmental certification ISO 14001:2004)
complementary pieces	TRACE: Step, Corner tile, Skirting
patents	Registered design n° 001913062-0005 – date of registration: 06/09/2011 Registered design n° 001912999-0014 – date of registration: 06/09/2011
category	UNI EN 14411 App G (BIA group) UGL

NET



120·120 cm
47"·47"

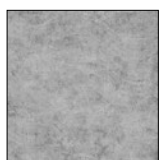


30·120 cm
12"·47"



60·60 cm
24"·24"

TRACE



120·120 cm
47"·47"



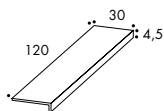
30·120 cm
12"·47"



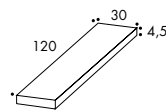
60·60 cm
24"·24"

complementary pieces

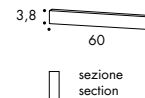
step
30·120·4,5 cm
12"·47"·1 7/8"



corner tile
30·120·4,5 cm
12"·47"·1 7/8"



skirting
3,8·60 cm
2"·24"



Laying and maintenance tips

use	Floor, wall – indoor, outdoor.
installation	For an even, smooth shading effect when laying, alternate material from several different boxes. The double spreading technique is recommended for the 120x120 size.
recommended adhesive	Adhesive for porcelain stoneware.
recommended joints	2mm joints. Use wedges to fix the caliber differences in work size between tiles.
recommended fillers	Cement-based grout / epoxy grout. Remove all traces of grout carefully before it dries completely.
cleaning at the end of installation	CEMENT-BASED GROUT: Buffered acid (e.g. DETERDEK PRO by FILA, or similar). Wet the floor with water, dilute the product 1:5 with water and pour it on the floor. Wait for 2 or 3 minutes then use a white scotch brite pad and rinse well with clean water. EPOXY GROUT: Alkaline detergent (e.g. FILA CR10 by FILA). FILA CR10: apply pure, wait for 30 minutes then use a green scotch brite pad. SILICONE: Solvent for silicone (e.g. FILA ZERO SIL). Pour it straight onto the stain, wait for 20 minutes and remove the mark using scotch brite. PAINT: Can usually be removed using water, but if resin-based paints or particular enamels have been used, it is best to ask the manufacturer which solvent is most suitable. RUST: stain remover es. FILA NO RUST. Apply the product onto the stain, leave for 15 minutes, remove the residue and rinse thoroughly.
general cleaning (installed tiles)	You are recommended to use ordinary neutral detergent diluted in water. Avoid using acid or alkaline products, waxes and/or impregnants. During ordinary cleaning it is recommended to use extremely abrasive items (such as scourers and iron or steel sponges) as little as possible. This recommendation must be adhered to rigorously in the case of tiles with a glossy surface finishing as they are more susceptible to the risk of scuffs, scratches and loss of shine, etc. In the event of heavy dirt or particularly textured surfaces, use an alkaline detergent and rinse after washing. For large surfaces, the use of a floor washing machine is recommended. During every-day cleaning procedures, it is necessary to remember that certain types of dirt (dust, sand) increase the abrasive effect of foot-traffic. Therefore we recommend that you avoid bringing in this type of dirt, which comes in from the outside, by placing a door-mat at the entrance.
calibers (real size)	60cm x 60cm -> 594mm x 594mm 120cm x 120cm -> 1190mm x 1190mm 30cm x 120cm -> 296mm x 1190mm